

# 产品范围

## Product Range

您的需求是我们的动力，我们以实力满足您的需求。  
Your drive is our strength. Your strength is our drive.



# 产品范围

## Product Range

动力传输领域的非凡实力，源自 1946。

60 多年来，位于德国波鸿 (Bochum) 的 REICH-KUPPLUNGEN 公司在提供其他产品之外，还提供种类多样的扭转弹性联轴器。

这些联轴器的一个重点特征和基本品质保证就在于：所用的弹性元件由公司内部开发和制造。

我们提供的联轴器的所有组件均由现代化的生产设备制造而成。我们使用的室内测试台和检测设备采用最高技术标准，可以确保“REICH-KUPPLUNGEN”品牌的动力传输组件具备品质优异、经久耐用的特性。

我们各种型号的产品获得了各船级社的认可。

我们坚持不断地改进产品开发，创新采用电脑模拟与计算技术，加上我们在贸易与产品方面多年积累的知识和经验，这些因素对于确保产品成功赢得大量客户起到了决定性的作用。

我们拥有 100 多名成员的专业团队，随时准备为您提供灵活高效的咨询、开发及交付解决方案。我们拥有遍布全球的分销与合作伙伴网络，可以确保让您随时随地迅速获得我们的产品。

Competence in the power transmission since 1946.

For more than 60 years REICH-KUPPLUNGEN in Bochum has provided besides other products an extensive program of torsionally flexible couplings.

A focal point and essential quality factor is our in-house development and manufacturing of the utilized elastomeric elements.

All components of the couplings are being manufactured on the most modern production equipment. The in-house test benches and inspection facilities of highest technical standards guarantee the high quality and long-life of the components for the power transmission with the „REICH-KUPPLUNGEN“ brand.

Typ Approvals of different classification societies are present.

The constant advancement in developing our products and the use of computer simulations and calculations, together with many years of knowledge of our trade and products, are decisively ensuring the success of our products for the large number of customers.

We are at your disposal with a team of about 100 members for flexible and „competent“ consultation, development and delivery of efficient solutions. Our world-wide distribution and partner network ensures that our products are at all times and anywhere quickly available to you.



## ARCUSAFLEX

## ARCUSAFLEX-VSK

## TOK 耦合系统

## TOK coupling systems



- 用于内燃机的高弹性橡胶盘联轴器
- 带有锥形轴套的 AC-T 系列
- 带有螺栓轮轴的 AC 系列
- 线性弹簧特征
- 也可用作接轴对接联轴器

扭矩范围：  
330-100,000 Nm

防爆性能符合 94/9/EG 规定

- Highly flexible rubber disc couplings for internal combustion engines
- Series AC-T with taper bush
- Series AC with bolted hub
- Linear spring characteristic
- Available also as shaft to shaft coupling

Torque range:  
330 Nm – 100 000 Nm

Explosion protection acc. to directive 94/9/EG



- 用于安装万向接轴的高弹性扭转软联轴器
- 设计紧凑简短
- 带有或不带摩擦阻尼
- 也可用于万向接轴

扭矩范围：  
390-20,000 Nm

- Highly flexible, torsionally soft couplings for universal joint shaft mounting
- Compact and short design
- With or without friction damping
- Available also with universal joint shaft

Torque range:  
390 Nm – 20 000 Nm



- 高弹性联轴节系统
- 可选择单组件、双组件版本
- 带有内部轴承座以连接万向节接轴或 CV 接轴
- 带有 CFRP 垫片

扭矩范围：  
100-35,000 Nm

根据大小，  
转速可达 10,000 rpm

- Highly flexible coupling shaft system
- single and double element version
- with internal bearing support to connect with u-joint shaft or with CV-shaft
- with CFRP spacer available

Torque range:  
100 Nm – 35 000 Nm

permissible speed, depending on the size, up to 10 000 rpm

您的需求是我们的动力，我们以实力满足您的需求。

Your drive is our strength. Your strength is our drive.

# 产品范围

## Product Range

### FLEXDUR



- 扭转刚性设计
- 角度、轴向、径向设计灵活
- 免费维护
- 可耐受 250 °C 高温
- 提供多种设计，配备长垫片

扭矩范围：  
90-800,000 Nm

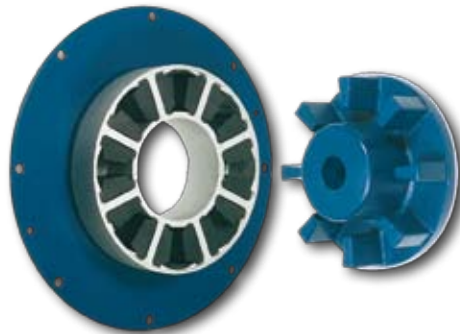
防爆性能符合 94/9/EC 规定

- Torsionally rigid design
- angular, axial, radial flexibility
- maintenance-free
- temperature resistant up to 250 °C
- various designs, also with long spacer

Torque range:  
90 Nm – 800 000 Nm

explosion protection acc. to directive 94/9/EC

### MULTI MONT OCTA



- 用于内燃机驱动的固定机械的弹性飞轮联轴器
- 采用插入式爪形联轴器设计

扭矩范围：  
340-20,000 Nm

- Flexible flywheel couplings for stationary machinery with internal combustion engine drive
- Plug-in type claw coupling design

Torque range:  
340 Nm – 20 000 Nm

### MULTI MONT SELLA, DEKA, GIGANT



- 扭转弹性爪形联轴器
- 采用故障无碍设计
- 橡胶元件便于径向安装
- 带有制动盘和制动鼓
- 提供多种组合可能

扭矩范围：  
40-1,000,000 Nm

- Torsionally flexible claw couplings
- fail-safe design
- rubber elements easily radially mountable
- with brake disc and brake drum available
- large variety of possible combinations

Torque range:  
40 Nm – 1 000 000 Nm

可按照客户要求提供模铸橡胶元件以及橡胶金属组合件。

Moulded rubber components as well with rubber-metal bonding to customer's requirements.

## MULTI MONT ASTRA

## MULTI CROSS FORTE

## MULTI CROSS RILLO



- 带有或不带有锥形轴套的扭转弹性爪形联轴器

扭矩范围：  
10-3,600 Nm

- Torsionally flexible claw couplings with or without taper bush

Torque range:  
10 Nm – 3 600 Nm



- 采用高弹性设计，可补偿重大接轴位移
- 具有优异的减震性能
- 由于采用模块式设计，可将备件库存降至最低

扭矩范围：  
160-54,000 Nm

- Highly flexible design compensating major shaft displacements
- with excellent shock and vibration damping properties
- minimum spare inventory thanks to the modular design

Torque range:  
160 Nm – 54 000 Nm



- 高弹性轮胎式联轴器
- 具有减震性能
- 带有锥形轴套，便于安装接轴，且可节省时间
- 带有垫片

扭矩范围：  
24-14,500 Nm

- Highly flexible tyre couplings
- Shock and vibration damping
- with taper bushes for extremely easy and time-saving shaft mounting
- also available with spacer

Torque range:  
24 Nm – 14 500 Nm

采用自主模具设计和内部制造。

Own mould design and in-house manufacturing.

# 产品范围

## Product Range

### REIBO

### 动力输出离合器

### Power Take Off clutches

### 齿轮联轴器

### Tooth gear couplings



- 弹性轮胎式联轴器
- 采用故障无碍设计
- 采用灰色铸铁或锻钢材质
- 带有制动盘或制动鼓



- 内部安装有手动离合器和用于内燃机的内轴承，采用 SAE 连接
- 配有齿轮箱



- 多种系列，涵盖多种特定应用领域
- 轴联轴器
- 根据客户图表制作的特殊齿轮联轴器

扭矩范围：  
350-350,000 Nm

扭矩范围：  
170-4,150 Nm

扭矩范围：  
1,200-7,780,000 Nm

根据要求定制的大型联轴器

- Flexible pin-tyre couplings
- Fail-safe design
- Grey cast iron or steel
- With brake disc or brake drum

- Housing with manual clutch and internal bearing for internal combustion engines with SAE connections
- also available with gearbox

- Many different series covering a wide variety of specific application areas
- spindle couplings
- special gear couplings according to customer's drawings

Torque range:  
350 Nm – 350 000 Nm

Torque range:  
170 Nm – 4 150 Nm

Torque range:  
1 200 Nm – 7 780 000 Nm

Larger couplings on request

按照客户要求定制的特殊联轴器。

**Special couplings according to customer's requirements.**

## 鼓形联轴器

### Barrel couplings



- 用于连接起重机吊起齿轮的绳筒或驱动齿轮箱输出轴的纹盘
- 用于校准误差补偿
- 便于组装

扭矩范围:  
4,500–685,000 Nm

- For connecting rope drums of crane hoist gears or winch drives to the output shaft of gearbox
- for alignment error compensation
- for ease of assembly

Torque range:  
4 500 Nm – 685 000 Nm

## 行星传动

### Planetary drives



- 采用内嵌或斜切式齿轮组，设计紧凑
- 采用模块式构造，允许不同的降减率，可以安装在多个位置
- 可采用电力或液压驱动

输出扭矩范围:  
500–650,000 Nm

- Inline or bevel stages gear units in compact design
- The modular construction permits a wide range of reduction ratios and mounting positions
- Drive with electric or hydraulic motor

Output torque range  
from 500 to 650 000 Nm

## 螺旋致动器

### Screw Jack Actuators



- 线性运动和定位
- 配备梯形螺杆或滚珠螺杆
- 线性速度可达 150 mm/s

螺旋千斤顶  
最高负荷可达 350 kN

线性致动器  
最高负荷可达 80 kN,  
最快速度可达 500 mm/s

- Linear motion and positioning
- with acme screw or ball screw
- Linear speed up to 150 mm/s

Screw Jacks  
up to 350 kN load capacity

Linear actuators  
up to 80 kN and 500 mm/s

内部开发、测试和制造。

In-house development, testing and manufacturing.



Dipl.-Ing. Herwarth Reich GmbH  
地址: Vierhausstraße 53 • 44807 Bochum  
Postfach 10 20 66 • 44720 Bochum  
电话: +49 (0) 234 9 59 16 - 0  
传真: +49 (0) 234 9 59 16 - 16  
E-Mail: [mail@reich-kupplungen.de](mailto:mail@reich-kupplungen.de)  
[www.reich-kupplungen.de](http://www.reich-kupplungen.de)